

# FY2009 Rail Enhancement Fund Recommended Project

11

## Passenger Corridor Initiatives

### NS: VRE Route - Alexandria to Manassas

**Description:** VRE is the primary user on the two NS mainline tracks between Alexandria and Manassas. The project will provide capital improvements needed for NS to support Class 4 rail track standards for continued passenger train use of the system.

**Project type:** Design and construction

**Total project cost:** \$8,252,999

**Commonwealth's share:** \$5,777,099 (70%)

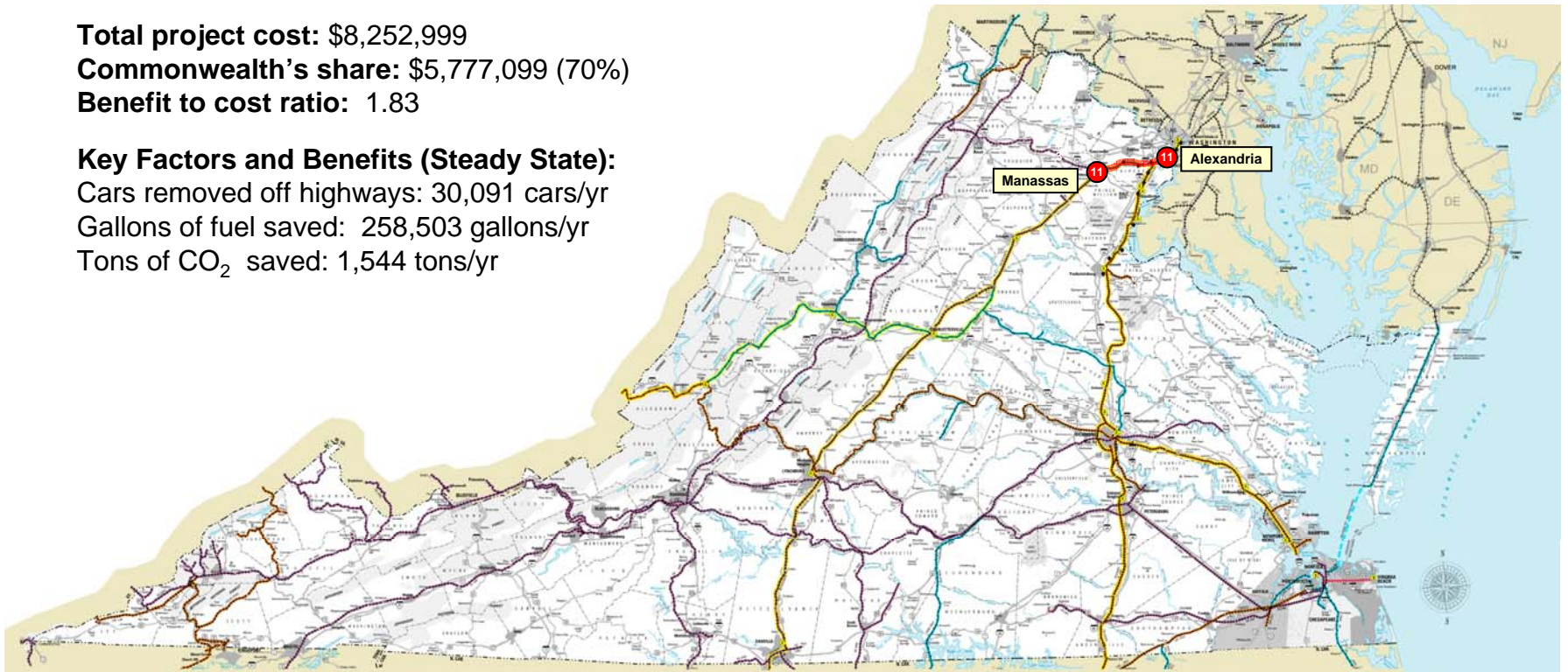
**Benefit to cost ratio:** 1.83

#### Key Factors and Benefits (Steady State):

Cars removed off highways: 30,091 cars/yr

Gallons of fuel saved: 258,503 gallons/yr

Tons of CO<sub>2</sub> saved: 1,544 tons/yr



2007 State Railroad Map

# FY2009 Rail Enhancement Fund Recommended Project

12

## Passenger Corridor Initiatives NS: Alexandria to Lynchburg

**Description:** The project will provide improvements to the NS mainline between Washington DC and Lynchburg for a proposed new Amtrak passenger service. Various curve, turnout modifications, speed improvements and potential station modifications are required for the new daily passenger service which will originate and end in Lynchburg. The improvements would also provide for increased speeds and capacity for NS freight operations.

**Project type:** Design and construction

**Total project cost:** \$14,000,000

**Commonwealth's share:** \$9,800,000 (70%)

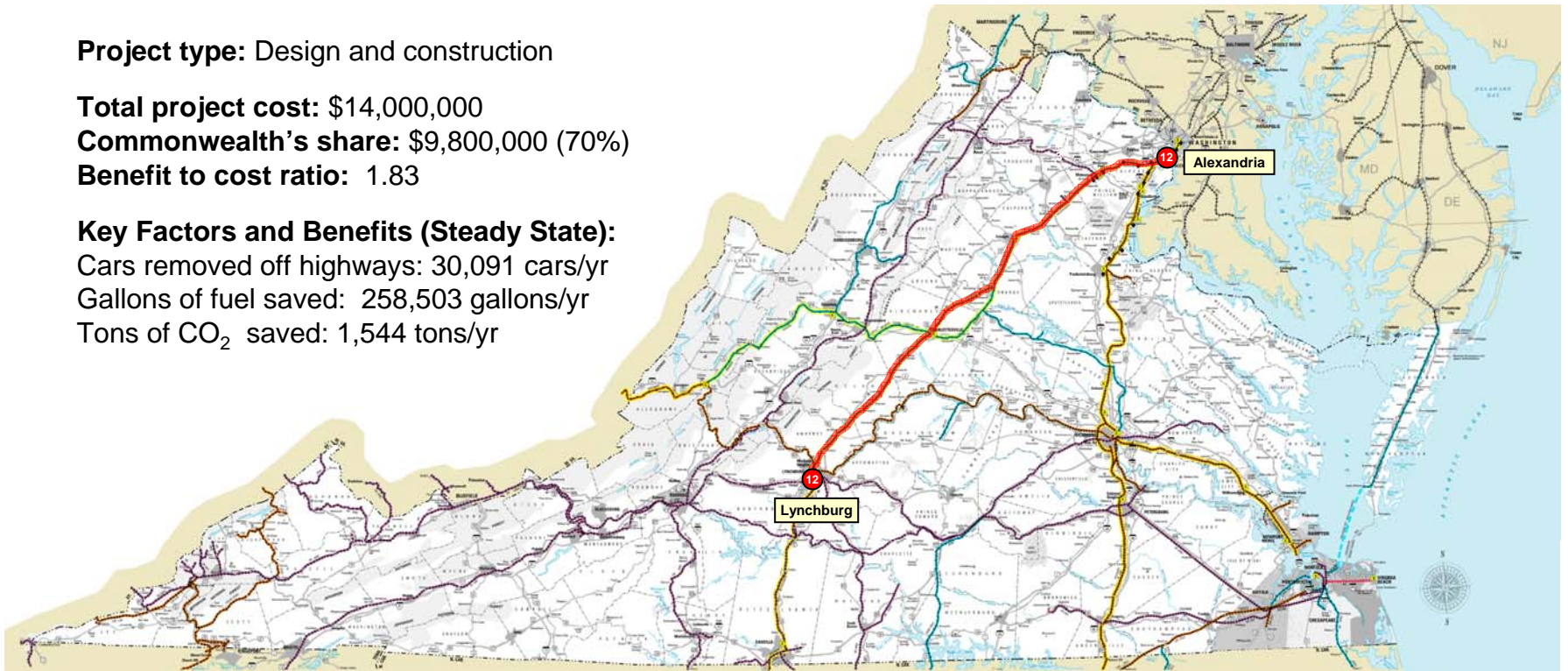
**Benefit to cost ratio:** 1.83

### Key Factors and Benefits (Steady State):

Cars removed off highways: 30,091 cars/yr

Gallons of fuel saved: 258,503 gallons/yr

Tons of CO<sub>2</sub> saved: 1,544 tons/yr



2007 State Railroad Map